



THE LIBRARY
OF
THE UNIVERSITY
OF CALIFORNIA
LOS ANGELES



Digitized by the Internet Archive
in 2007 with funding from
Microsoft Corporation



ST. CHRISTOPHER (WOODCUT)
 John Rylands Library, Manchester

381
58
ch

UNIVERSITY OF CALIFORNIA
AT
LOS ANGELES
LIBRARY



MADONNA, CHILD, AND SAINTS (WOODCUT)

Collection of Paul J. Sachs, Cambridge, Mass.

THE UNIVERSITY PRINTS
BOSTON

UNKNOWN GERMAN. XV CENT.

474470

01
8
c.h

UNIVERSITY OF CALIFORNIA
AT
LOS ANGELES
LIBRARY



THE QUEEN OF BIRDS (ENGRAVING)
Bibliothèque Nationale, Paris

THE UNIVERSITY PRINTS
BOSTON

MASTER OF THE PLAYING CARDS. FL. 1445
GERMANY

301

58

r.h

UNIVERSITY OF CALIFORNIA
AT
LOS ANGELES



ST. JOHN ON THE ISLAND OF PATMOS WITH SYMBOLS
OF THE FOUR EVANGELISTS (ENGRAVING)

Museum of Fine Arts, Boston

THE UNIVERSITY PRINTS
BOSTON

MASTER E. S. FL. 1450-1470
GERMANY

381
158
v.l.

UNIVERSITY OF CALIFORNIA
AT
LOS ANGELES



FLIGHT INTO EGYPT (ENGRAVING)
Fogg Art Museum, Cambridge

01
58
v. L

UNIVERSITY OF CALIFORNIA
AT
LOS ANGELES
LIBRARY



MADONNA IN THE COURTYARD (ENGRAVING)
Museum of Fine Arts, Boston

301
158
u.k

UNIVERSITY OF CALIFORNIA
AT
LOS ANGELES
LIBRARY



ST. GEORGE AND THE DRAGON (DRY-POINT)

British Museum, London

THE UNIVERSITY PRINTS
BOSTON

MASTER OF THE AMSTERDAM CABINET. FL. 1480
GERMANY

301
58
r. h

UNIVERSITY OF CALIFORNIA
AT
LOS ANGELES



PORTRAIT OF A LADY (ENGRAVING)
Kupferstichkabinett, Berlin

01
58
v. L

UNIVERSITY OF CALIFORNIA
AT
LOS ANGELES



OTTO PRINT (ENGRAVING, FINE MANNER)
Fogg Art Museum, Cambridge

THE UNIVERSITY PRINTS
 BOSTON

UNKNOWN FLORENTINE. XV CENT.
 ITALY

01
58
u.h

UNIVERSITY OF CALIFORNIA
AT
LOS ANGELES
LIBRARY



ASSUMPTION OF THE VIRGIN (ENGRAVING, BROAD MANNER)
Fogg Art Museum, Cambridge

THE UNIVERSITY PRINTS
BOSTON

UNKNOWN FLORENTINE. XV CENT.
ITALY

301
58
u.h

UNIVERSITY OF CALIFORNIA
AT
LOS ANGELES
LIBRARY



BATTLE OF THE NUDES (ENGRAVING)

Collection of Paul J. Sachs, Cambridge

THE UNIVERSITY PRINTS
BOSTON

A. POLLAIUOLO. 1432 (?)—1498
ITALY

301
158
v. 2

UNIVERSITY OF CALIFORNIA
AT
LOS ANGELES
LIBRARY



ABUNDANCE (ENGRAVING)
 Museum of Fine Arts, Boston

01
58
L

UNIVERSITY OF CALIFORNIA
AT
LOS ANGELES
LIBRARY



MADONNA AND CHILD (ENGRAVING)
Museum of Fine Arts, Boston

THE UNIVERSITY PRINTS
BOSTON

MANTEGNA. 1431—1506
ITALY

301
58
r.h

UNIVERSITY OF CALIFORNIA
AT
LOS ANGELES



BATTLE OF SEA-GODS. LEFT PORTION OF A FRIEZE (ENGRAVING)
Museum of Fine Arts, Boston

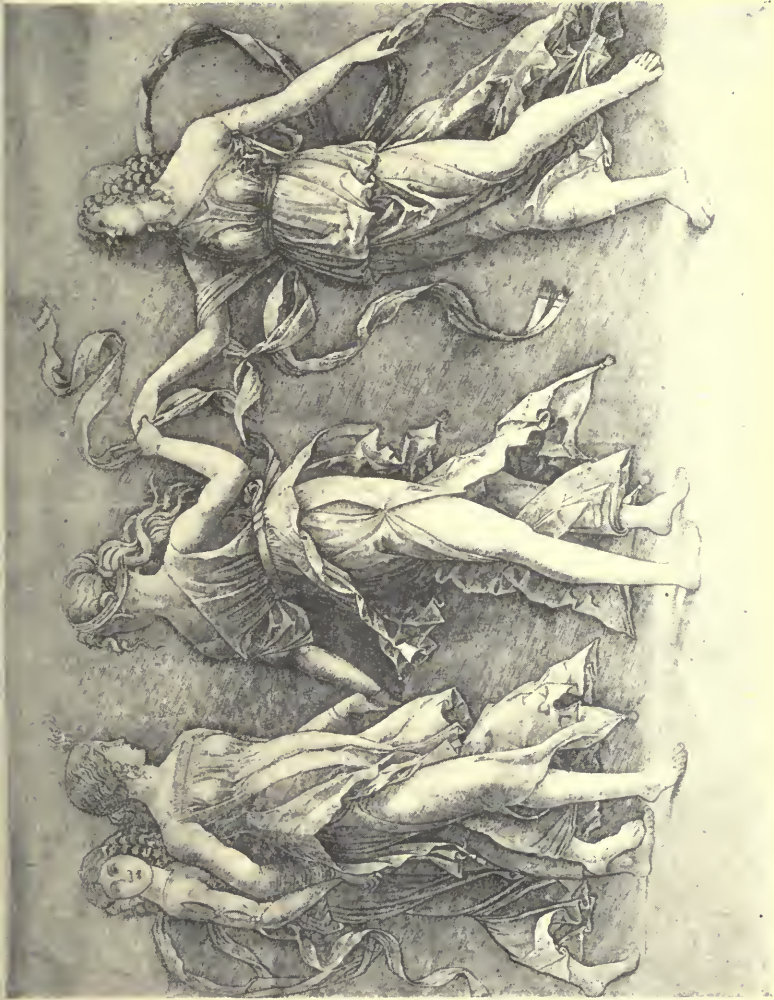
THE UNIVERSITY PRINTS
BOSTON

MANTEGNA. 1431—1506
ITALY

14
301
458
ex. h

UNIVERSITY OF CALIFORNIA
AT

LOS ANGELES



FOUR WOMEN DANCING (ENGRAVING)
Museum of Fine Arts, Boston

THE UNIVERSITY PRINTS
BOSTON

SCHOOL OF MANTEGNA. XV CENT
ITALY

N

5301

158

ser. h

UNIVERSITY OF CALIFORNIA
AT
LOS ANGELES
LIBRARY



HOLY FAMILY WITH ST. JOHN (ENGRAVING)

Museum of Fine Arts, Boston

**THE UNIVERSITY PRINTS
BOSTON**

**GIOVANNI ANTONIO DA BRESCIA. FL. 1500—1516
ITALY**

N

5301

U58

ser. h

UNIVERSITY OF CALIFORNIA

AT

LOS ANGELES



THREE STAGS (ENGRAVING)
Museum of Fine Arts, Boston

N
5301
2158
ser. L

UNIVERSITY OF CALIFORNIA
AT



APOLLO AND DIANA (ENGRAVING)
Museum of Fine Arts, Boston

N
5301
758
per. h

UNIVERSITY OF CALIFORNIA
AT
LOS ANGELES



JUDITH (ENGRAVING)
Museum of Fine Arts, Boston

N
5301
758
ser. h

UNIVERSITY OF CALIFORNIA
AT
LOS ANGELES



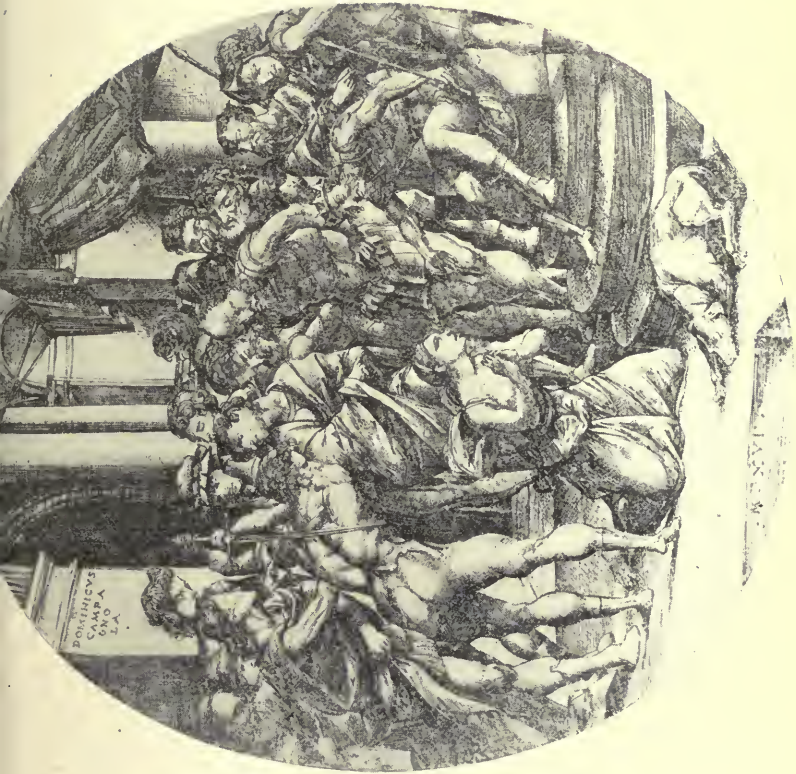
ST. JOHN THE BAPTIST (ENGRAVING)
Collection of Paul J. Sachs, Cambridge

N
301
758
er.h

UNIVERSITY OF CALIFORNIA

AT

LOS ANGELES



BEHEADING OF ST. CATHERINE (ENGRAVING)
Museum of Fine Arts, Boston

N
5301
2458
v. 2

UNIVERSITY OF CALIFORNIA
AT
LOS ANGELES



MADONNA AND CHILD (ENGRAVING)
Fogg Art Museum, Cambridge

THE UNIVERSITY PRINTS
BOSTON

BENEDETTO MONTAGNA. CA. 1470—1540
ITALY

IV
5301
U58
ser. h

UNIVERSITY OF CALIFORNIA
AT
LOS ANGELES



DAVID AND GOLIATH. AFTER RAPHAEL (CHIAROSCURO)
Museum of Fine Arts, Boston

THE UNIVERSITY PRINTS
BOSTON

UGO DA CARPI. 1455—1523
ITALY

N
5301
758
ser. h



THE RIDERS ON THE FOUR HORSES: APOCALYPSE (WOODCUT)
Museum of Fine Arts, Boston

71

5301

258

ser. h

UNIVERSITY OF CALIFORNIA
AT



CHRIST APPEARING TO MARY MAGDALEN: SMALL PASSION (WOODCUT)
Museum of Fine Arts, Boston

N
5301
2458
Ser. L

UNIVERSITY OF CALIFORNIA
AT
LOS ANGELES



THE FLIGHT INTO EGYPT: LIFE OF THE VIRGIN (WOODCUT)
Fogg Art Museum, Cambridge

THE UNIVERSITY PRINTS
BOSTON

DÜRER. 1471—1528
GERMANY

11
5301
258
ser. 2

UNIVERSITY OF CALIFORNIA
AT



THE TRINITY (WOODCUT)
Museum of Fine Arts, Boston

IV
5301
258
ser. L

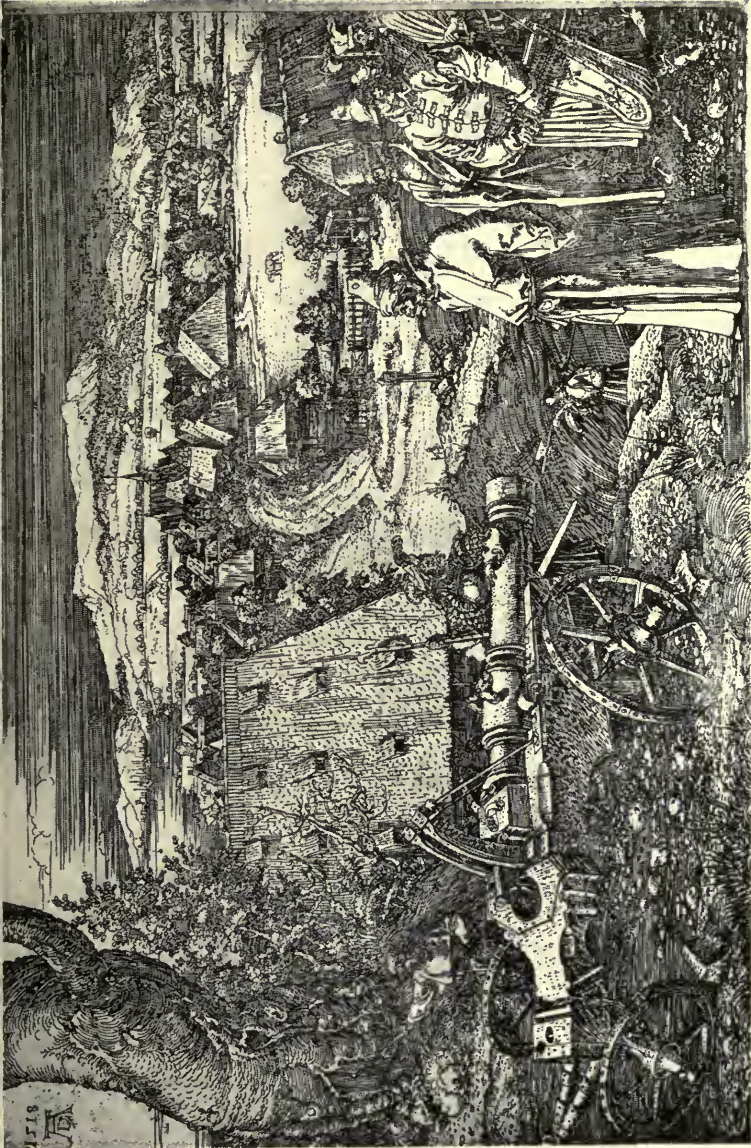
UNIVERSITY OF CALIFORNIA
AT



ST. JEROME IN HIS CELL (ENGRAVING)
Museum of Fine Arts, Boston

IN
5301
7158
L

UNIVERSITY OF CALIFORNIA
AT



THE CANNON (ETCHING)
Museum of Fine Arts, Boston

THE UNIVERSITY PRINTS
BOSTON

DÜRER. 1471-1528
GERMANY

N
5301
-2458
per. L

UNIVERSITY OF CALIFORNIA
AT
LOS ANGELES



HOLY FAMILY (DRY-POINT)
Museum of Fine Arts, Boston

THE UNIVERSITY PRINTS
BOSTON

DÜRER. 1471—1528
GERMANY

N
5301
758
ser. h



EQUESTRIAN PORTRAIT OF MAXIMILIAN I (CHIAROSCURO)
Museum of Fine Arts, Boston

IV
5301
758
ser. 2

UNIVERSITY OF CALIFORNIA
AT
LOS ANGELES



ST. GEORGE AND THE DRAGON (WOODCUT)

Museum of Fine Arts, Boston

THE UNIVERSITY PRINTS
BOSTON

CRANACH THE ELDER. 1472—1553
GERMANY

N
5301
7158
ser. h



ST. CHRISTOPHER (CHIAROSCURO)
Museum of Fine Arts, Boston

THE UNIVERSITY PRINTS
BOSTON

CRANACH THE ELDER. 1472—1553
GERMANY

N
5301
458
ser. L

UNIVERSITY OF CALIFORNIA
AT
LOS ANGELES



THE CRUCIFIXION (CHIAROSCURO)
Fogg Art Museum, Cambridge

N
5301
2158
ser. h

UNIVERSITY OF CALIFORNIA
AT

Daß Jungtint.



Der Ackermañ.



THE DANCE OF DEATH: THE PLOWMAN; THE YOUNG CHILD (WOODCUTS)
Fogg Art Museum, Cambridge

THE UNIVERSITY PRINTS
BOSTON

HOLBEIN THE YOUNGER. 1497—1543
GERMANY

N
5301
758
ser. h

UNIVERSITY OF CALIFORNIA
AT



LUCRETIA, AFTER RAPHAEL. (ENGRAVING)
Museum of Fine Arts, Boston

N
5301
258
w.h



MASSACRE OF THE INNOCENTS, AFTER RAPHAEL (ENGRAVING)
Museum of Fine Arts, Boston

THE UNIVERSITY PRINTS
BOSTON

RAIMONDI. CA. 1480—1530
ITALY

N
5301
258
ser. L



DAVID PLAYING BEFORE SAUL (ENGRAVING)
Museum of Fine Arts, Boston

THE UNIVERSITY PRINTS
BOSTON

L. VAN LEYDEN. 1494—1533
NETHERLANDS

N
5301
758
ser. 2



CHRIST ON THE MOUNT OF OLIVES: ROUND PASSION (ENGRAVING)
Museum of Fine Arts, Boston

THE UNIVERSITY PRINTS
BOSTON

L. VAN LEYDEN. 1494—1533
NETHERLANDS

11
5301
2158
ser. h

UNIVERSITY OF CALIFORNIA
AT
LOS ANGELES



THE MILKMAID (ENGRAVING)
Museum of Fine Arts, Boston

THE UNIVERSITY PRINTS
BOSTON

L. VAN LEYDEN, 1494 1533
NETHERLANDS

11
5301
758
ser. 2

UNIVERSITY OF CALIFORNIA
AT
LOS ANGELES



HENRI II AND DIANE DE POITIERS. (ENGRAVING)
Museum of Fine Arts, Boston

THE UNIVERSITY PRINTS
BOSTON

DUVET CA. 1485—1561
FRANCE

N
5301
758
ser. h

UNIVERSITY OF CALIFORNIA
AT
LOS ANGELES
LIBRARY



ST. CHRISTOPHER (ENGRAVING)

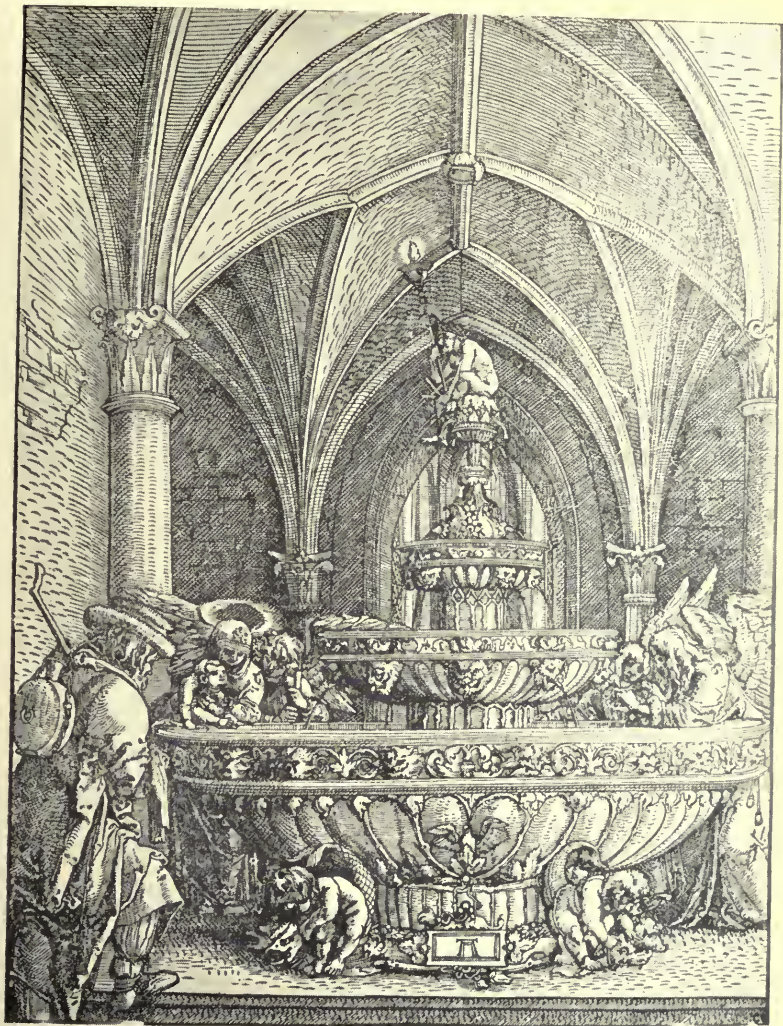
Museum of Fine Arts, Boston

THE UNIVERSITY PRINTS
BOSTON

ALTDORFER, CA. 1480—1538
GERMANY

N
5301
2158
ser. L

UNIVERSITY OF CALIFORNIA
AT
LOS ANGELES



HOLY FAMILY IN A CHAPEL (WOODCUT)
Museum of Fine Arts, Boston

THE UNIVERSITY PRINTS
BOSTON

ALTDORFER. CA. 1480—1538
GERMANY

301
158
v. 2

UNIVERSITY OF CALIFORNIA
AT
LOS ANGELES



THE PRODIGAL SON GUARDING SWINE (ENGRAVING)

Museum of Fine Arts, Boston

THE UNIVERSITY PRINTS
BOSTON

H. S. BEHAM. 1500—1550
GERMANY

71
5301
7158
ser. L

UNIVERSITY OF CALIFORNIA
AT
LOS ANGELES



CHARLES V (ENGRAVING)
 Museum of Fine Arts, Boston

35301
7158
ser. 2

UNIVERSITY OF CALIFORNIA
AT
LOS ANGELES



1511

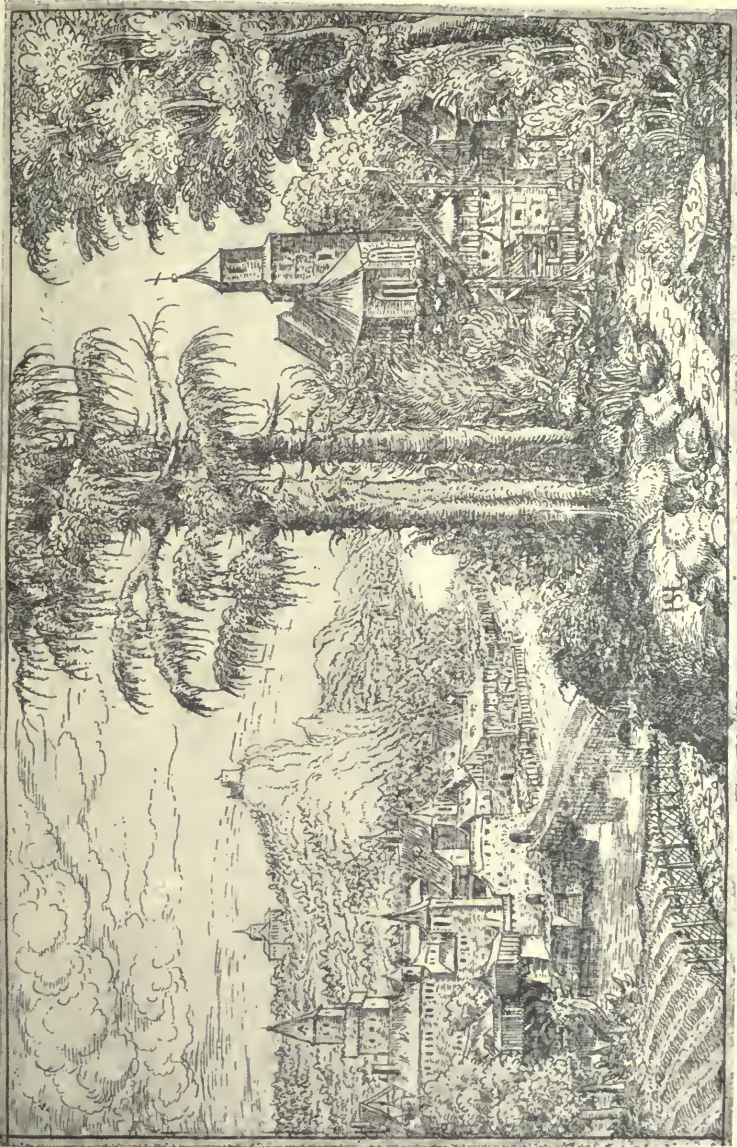
LANDSCAPE (ETCHING)
Museum of Fine Arts, Boston

THE UNIVERSITY PRINTS
BOSTON

HIRSCHVOGEL, 1503—1553 (?)
GERMANY

5301
258
er. 2

UNIVERSITY OF CALIFORNIA
AT
LOS ANGELES



RIVER LANDSCAPE WITH CHURCH (ETCHING)
Museum of Fine Arts, Boston

THE UNIVERSITY PRINTS
BOSTON

LAUTENSACK, CA. 1524 1563
GERMANY

5301

758

ser. L

UNIVERSITY OF CALIFORNIA
AT
LOS ANGELES



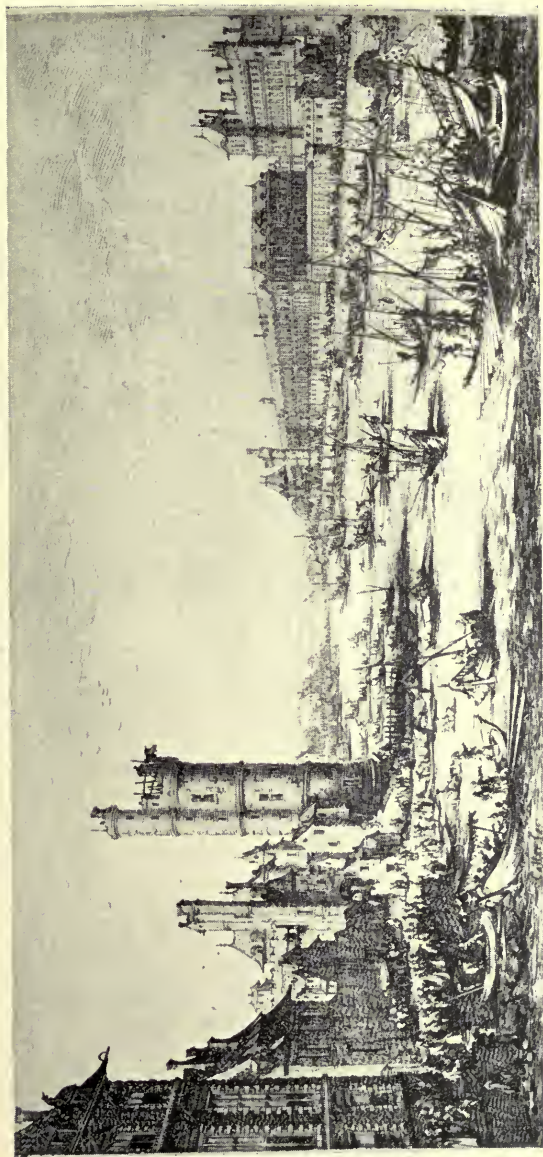
STANDARD BEARER (ENGRAVING)
Museum of Fine Arts, Boston

IV

5301

258

ser. h



PARIS: VUE DU LOUVRE (ETCHING)
Museum of Fine Arts, Boston

CALLOT. 1592—1635
FRANCE

THE UNIVERSITY PRINTS
BOSTON

5301
758
ex. L

UNIVERSITY OF CALIFOR
AT
LOS ANGELES



THE COWHERD (ETCHING)
Museum of Fine Arts, Boston

THE UNIVERSITY PRINTS
BOSTON

CLAUDE LORRAIN. 1600—1682
FRANCE

5301
7458
ser. L

UNIVERSITY OF CALIFORNIA
AT
LOS ANGELES



PORTRAIT OF SELF (ETCHING)
Museum of Fine Arts, Boston

5301

2458

ser. L

UNIVERSITY OF CALIFORNIA
AT
LOS ANGELES



FRANZ SNYDERS (ETCHING)
Museum of Fine Arts, Boston

11
5301
7158
ser. L

UNIVERSITY OF CALIFORNIA
AT
LOS ANGELES



CLEMENT DE JONGHE (ETCHING)
Museum of Fine Arts, Boston

THE UNIVERSITY PRINTS
BOSTON

REMBRANDT. 1606—1669
NETHERLANDS

5301
2158
ser. 2

UNIVERSITY OF CALIFORNIA
AT
LOS ANGELES



JAN LUTMA (ETCHING)
Museum of Fine Arts, Boston

THE UNIVERSITY PRINTS
BOSTON

REMBRANDT. 1606—1669
NETHERLANDS

11
5301
758
ser. 2

UNIVERSITY OF CALIFORNIA
AT
LOS ANGELES



TOBIT BLIND (ETCHING)
Museum of Fine Arts, Boston

THE UNIVERSITY PRINTS
BOSTON

REMBRANDT. 1606—1669
NETHERLANDS

IV

5301

758

ser. h

UNIVERSITY OF CALIFORNIA
AT
LOS ANGELES



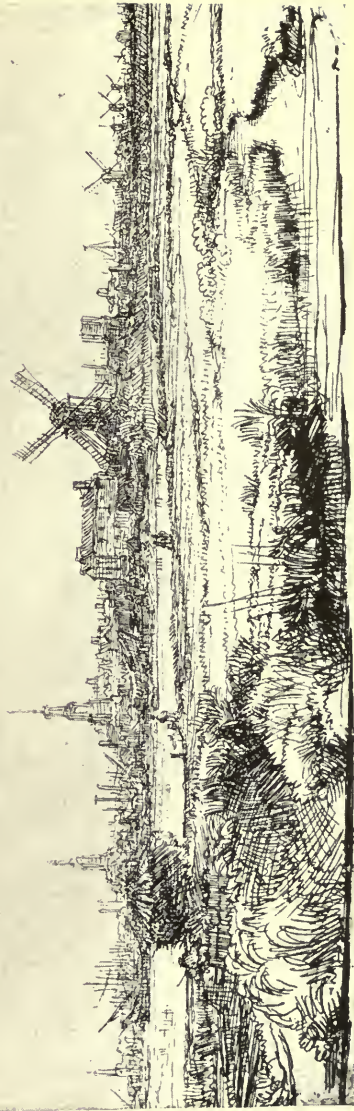
THE RAISING OF LAZARUS (ETCHING)
Museum of Fine Arts, Boston

THE UNIVERSITY PRINTS
BOSTON

REMBRANDT. 1606—1669
NETHERLANDS

11
5301
2158
ser. h

UNIVERSITY OF CALIFORNIA
AT
LOS ANGELES



AMSTERDAM (ETCHING)
Museum of Fine Arts, Boston

THE UNIVERSITY PRINTS
BOSTON

REMBRANDT. 1606-1669
NETHERLANDS

5301

7158

ser. h

UNIVERSITY OF CALIFORNIA
AT
LOS ANGELES



THREE TREES (ETCHING)
Museum of Fine Arts, Boston

THE UNIVERSITY PRINTS
BOSTON

REMBRANDT. 1606 1669
NETHERLANDS

5301
258
per h

UNIVERSITY OF CALIFORNIA
AT
LOS ANGELES



THE SPECTACLE SELLER (ETCHING)
Museum of Fine Arts, Boston

THE UNIVERSITY PRINTS
BOSTON

A. VAN OSTADE. 1610-1685
NETHERLANDS

5301
758
ser. L

UNIVERSITY OF CALIFORNIA
AT
LOS ANGELES
LIBRARY



WHEAT FIELD (ETCHING)
Fogg Art Museum, Cambridge

THE UNIVERSITY PRINTS
BOSTON

RUYSDAEL. 1628 (?)—1692
NETHERLANDS

5301
7158
ser. L

UNIVERSITY OF CALIFORNIA
AT
LOS ANGELES



COAST SCENE: MEN HANDLING MERCHANDISE (ETCHING)
Museum of Fine Arts, Boston

THE UNIVERSITY PRINTS
BOSTON

ZEEMAN. 1623—CA. 1663
NETHERLANDS

5301
758
ser. L

UNIVERSITY OF CALIFORNIA
AT
LOS ANGELES
LIBRARY



THE COWHERD (ETCHING)
Museum of Fine Arts, Boston

THE UNIVERSITY PRINTS
BOSTON

POTTER. 1625 1654
NETHERLANDS

5301
258
ser. L

UNIVERSITY OF CALIFORNIA
AT
LOS ANGELES



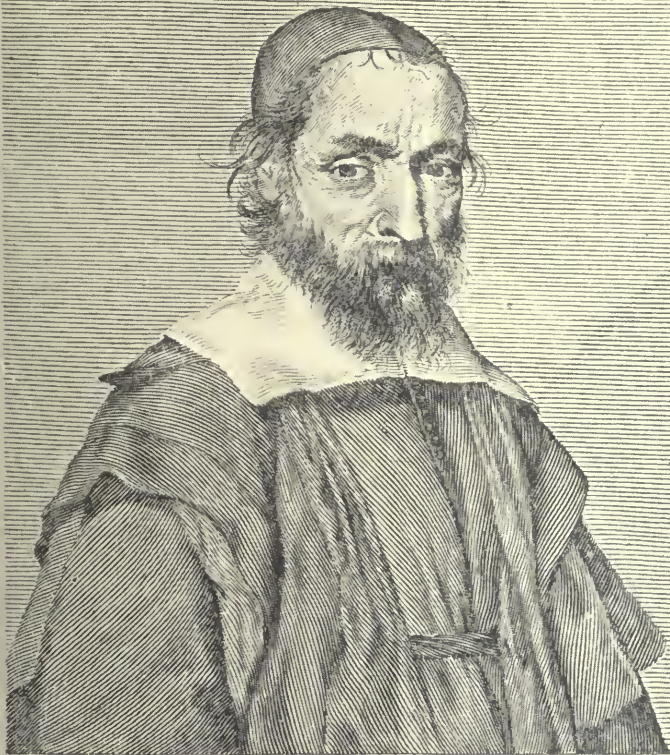
THE LARGE TREE (ETCHING)
Museum of Fine Arts, Boston

THE UNIVERSITY PRINTS
BOSTON

BOTH. CA. 1610—1652
NETHERLANDS

71
5301
7158
ser. L

UNIVERSITY OF CALIFORNIA
AT
LOS ANGELES



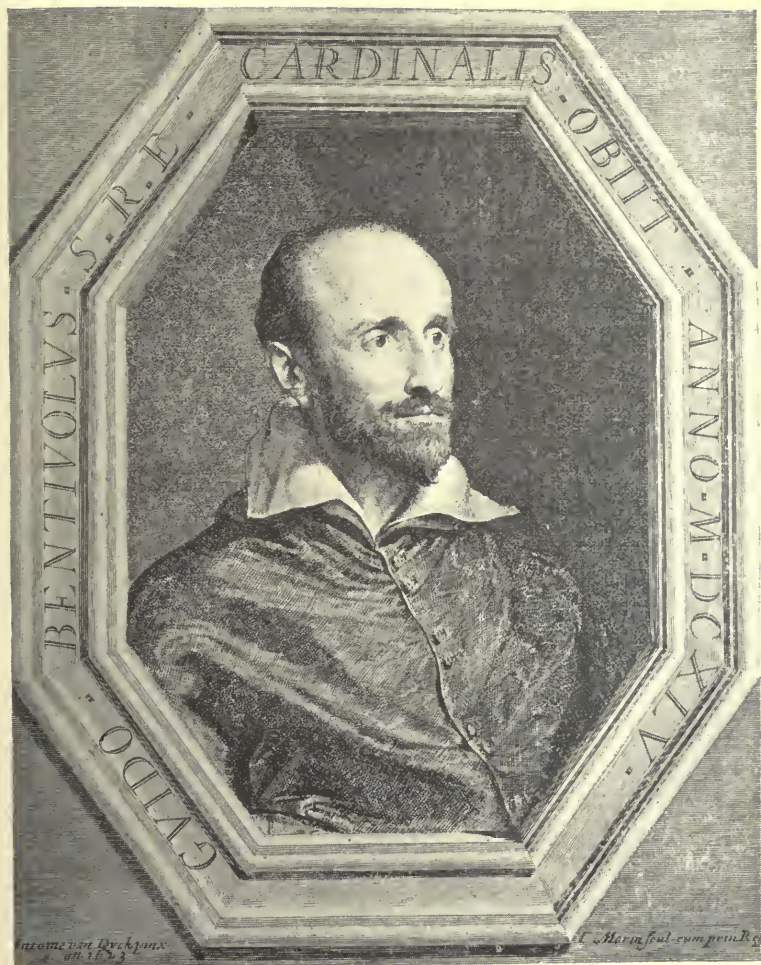
NICOLAVS CLAVDIVS FABRICIVS
DE PEIRESC SENATOR AQVENSIS

Ch. Mellan G. del. et fculp.

FABRI DE PEYRESC (ETCHING)
Museum of Fine Arts, Boston

5301
2158
ser. h

UNIVERSITY OF CALIFORNIA
AT
LOS ANGELES



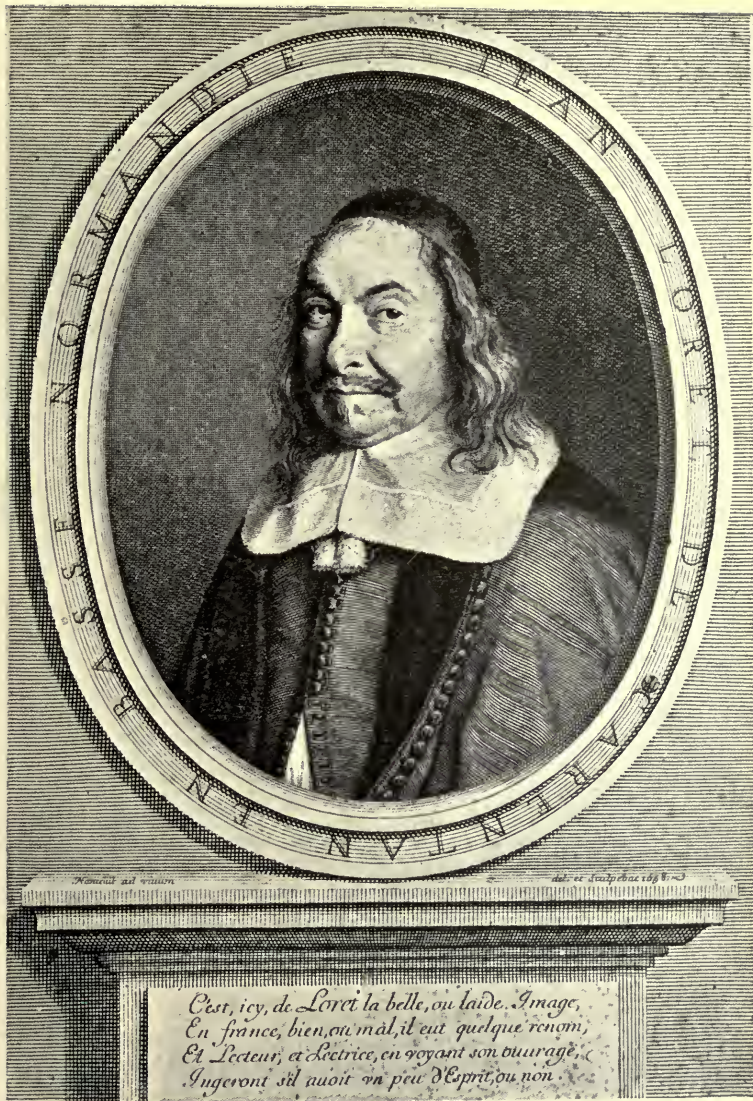
CARDINAL BENTIVOGLIO: AFTER VAN DYCK (ETCHING)
 Museum of Fine Arts, Boston

THE UNIVERSITY PRINTS
 BOSTON

MORIN. 1590(?) 1650
 FRANCE

5301
7158
ser. L

UNIVERSITY OF CALIFORNIA
AT
LOS ANGELES



JEAN LORET (ENGRAVING)
Museum of Fine Arts, Boston

5301
2158
ser. L

UNIVERSITY OF CALIFORNIA
AT
LOS ANGELES
LIBRARY



PHILIPPE DE CHAMPAIGNE (ENGRAVING)

Museum of Fine Arts, Boston

**THE UNIVERSITY PRINTS
BOSTON**

**EDELINCK. 1640 (41?)—1707
FRANCE**

5301

758

ser. h

UNIVERSITY OF CALIFORNIA

AT

LOS ANGELES



CARDINAL BOSSUET (ENGRAVING)
Museum of Fine Arts, Boston

5301
7158
ser. L

UNIVERSITY OF CALIFORNIA
AT
LOS ANGELES



LAUGHING AUDIENCE (ETCHING)
Museum of Fine Arts, Boston

THE UNIVERSITY PRINTS
BOSTON

HOGARTH. 1697-1764
ENGLAND

5301
7158
ser. h

UNIVERSITY OF CALIFORNIA
AT

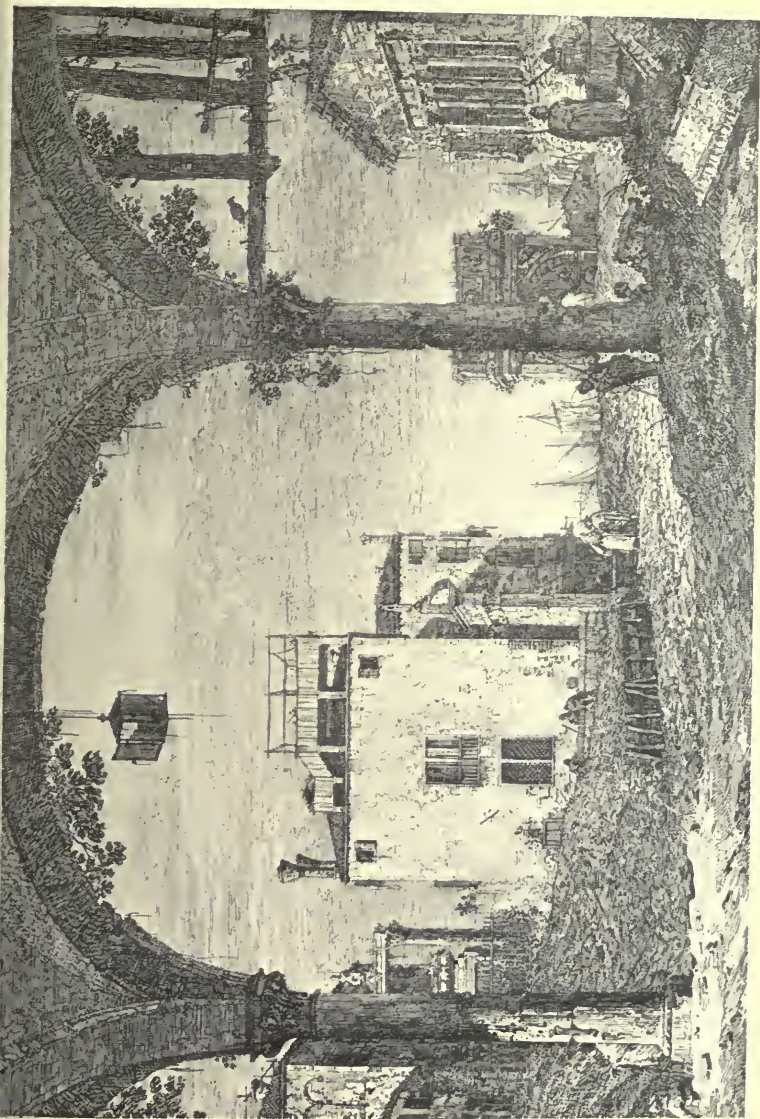


NYMPH WITH A TAMBOURINE (ETCHING)

Museum of Fine Arts, Boston

11
5301
2158
rev. L

UNIVERSITY OF CALIFORNIA
AT
LOS ANGELES



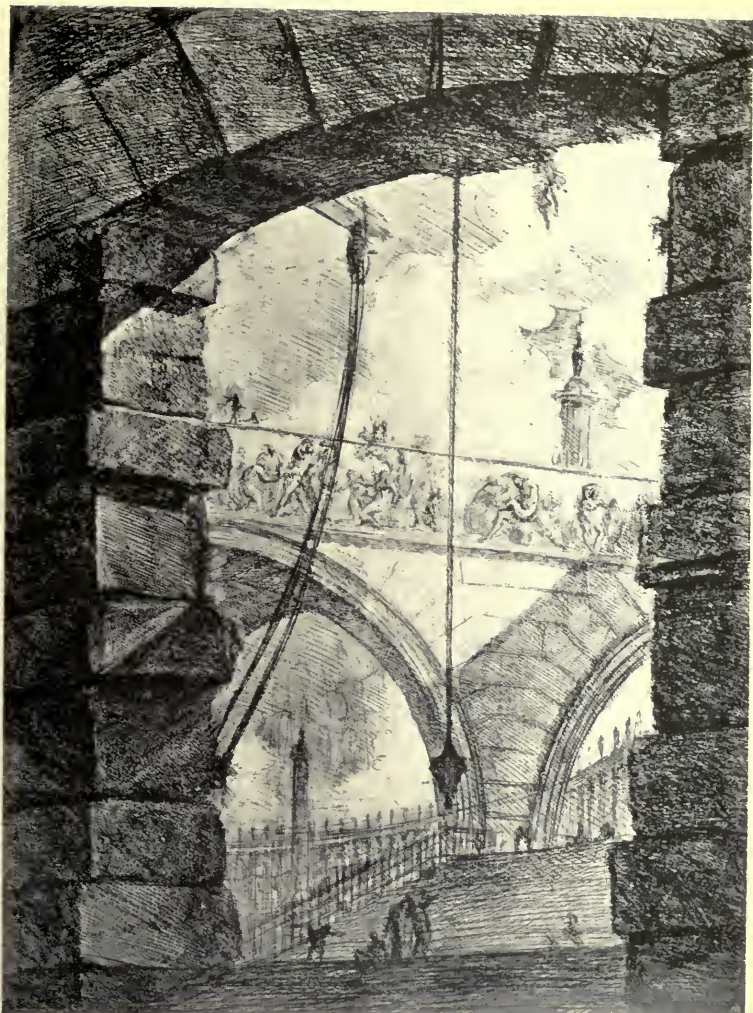
PORCH WITH A LANTERN (ETCHING)
Museum of Fine Arts, Boston

THE UNIVERSITY PRINTS
BOSTON

CANALETTO. 1697 1768
ITALY

5301
7458
ex. h

UNIVERSITY OF CALIFORNIA
AT
LOS ANGELES



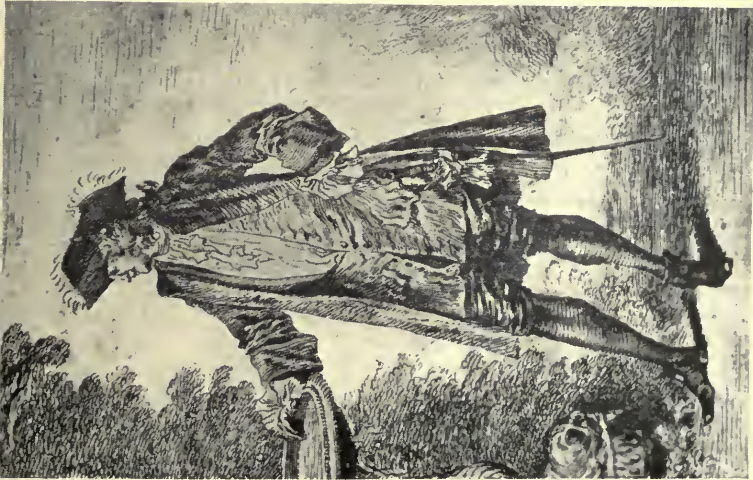
PRISON (ETCHING)
Museum of Fine Arts, Boston

THE UNIVERSITY PRINTS
BOSTON

PIRANESI. 1720—1778
ITALY

5301
158
per. L.

UNIVERSITY OF CALIFOR
AT
LOS ANGELES



MAN STANDING — WOMAN SEATED (ETCHINGS)
Fogg Art Museum, Cambridge

THE UNIVERSITY PRINTS
BOSTON



WATTEAU, 1684-1721
FRANCE

5301
7158
ser. h

UNIVERSITY OF CALIFORNIA
AT
LOS ANGELES



BACCHANAL (ETCHING)
Museum of Fine Arts, Boston

THE UNIVERSITY PRINTS
BOSTON

FRAGONARD. 1732—1806
FRANCE

5301.
7158
Mer. L

UNIVERSITY OF CALIFORNIA
AT
LOS ANGELES



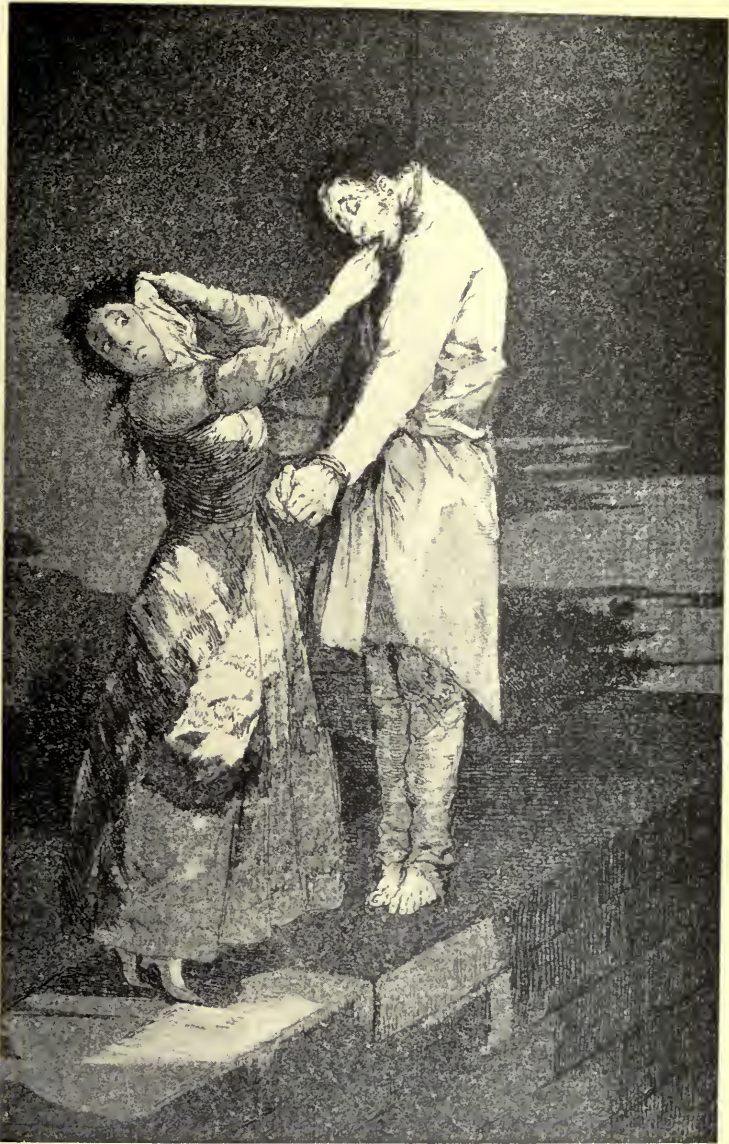
MR. PHILIP YORKE (STIPPLE)
Museum of Fine Arts, Boston

THE UNIVERSITY PRINTS
BOSTON

BARTOLOZZI. 1728-1813
ITALY (ENGLAND)

5301
7458
ser. L

UNIVERSITY OF CALIFORNIA
AT
LOS ANGELES



HUNTING FOR TEETH: CAPRICHOS (Etching and Aquatint)
Museum of Fine Arts, Boston

11
5301
7458
ser. 2



THE DEAD BRANCH (ETCHING AND AQUATINT)
Museum of Fine Arts, Boston

THE UNIVERSITY PRINTS
BOSTON

GOYA. 1746—1828
SPAIN

301
458
er. h

UNIVERSITY OF CALIFORNIA
AT
LOS ANGELES



THE STANDARD BEARER (MEZZOTINT)
Fogg Art Museum, Cambridge

THE UNIVERSITY PRINTS
BOSTON

PRINCE RUPERT. 1619 1682
GERMANY

5301
2458
ser. 2

UNIVERSITY OF CALIF.
AT
LOS ANGELES



LORDS JOHN AND BERNARD STUART, AFTER VAN DYCK (MEZZOTINT)
Museum of Fine Arts, Boston

THE UNIVERSITY PRINTS
BOSTON

MCARDELL. c. 1729-1765
ENGLAND

5901
7458
ser. L

UNIVERSITY OF CALIFORNIA
AT
LOS ANGELES



FRUIT PIECE, AFTER HUYSUM (MEZZOTINT)
Museum of Fine Arts, Boston

THE UNIVERSITY PRINTS
BOSTON

EARLOM. 1743—1822
ENGLAND

5301
2158
ex. 2

UNIVERSITY OF CALIFORNIA
AT
LOS ANGELES



SIR JOSHUA REYNOLDS (MEZZOTINT)
Fogg Art Museum, Cambridge

THE UNIVERSITY PRINTS
BOSTON

GREEN. 1739-1813
ENGLAND

301
458
er. h

UNIVERSITY OF CALIFORNIA
AT
LOS ANGELES



LADY CAROLINE MONTAGU (MEZZOTINT)
Museum of Fine Arts, Boston

301
158
ex. h

UNIVERSITY OF CALIFORNIA
AT
LOS ANGELES



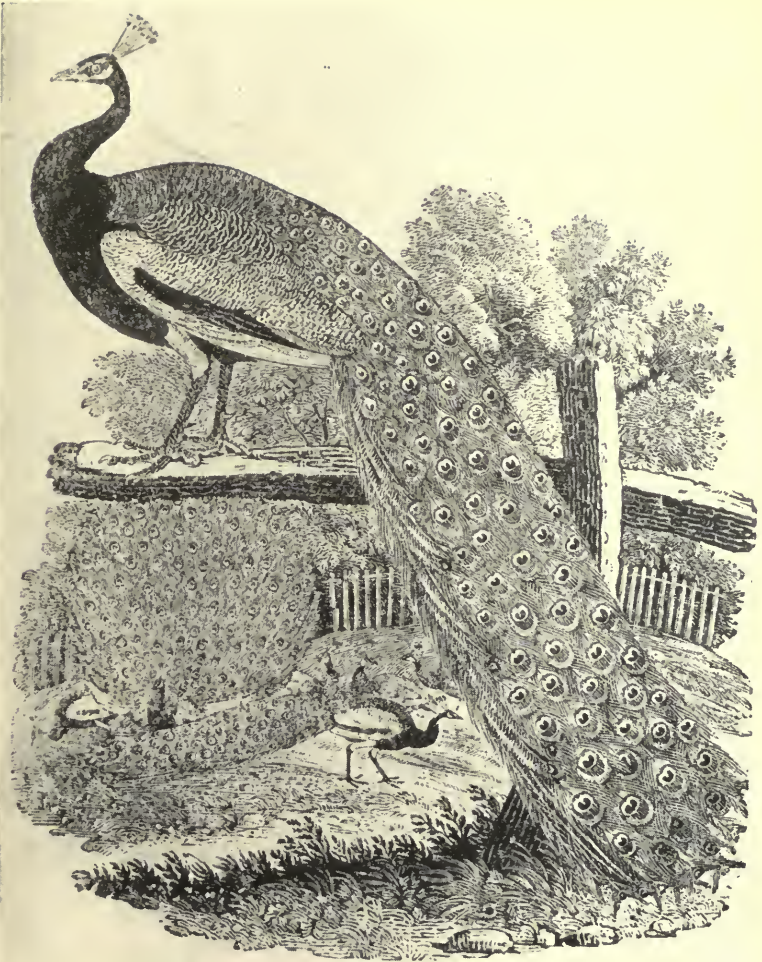
LIBER STUDIORUM: BEN ARTHUR (ETCHING AND MEZZOTINT)
Museum of Fine Arts, Boston

THE UNIVERSITY PRINTS
BOSTON

TURNER, 1775—1851
ENGLAND

11
5301
2458
ex. L

UNIVERSITY OF CALIFORNIA
AT
LOS ANGELES



BRITISH BIRDS: THE PEACOCK (WOOD-ENGRAVING)
Fogg Art Museum, Cambridge

THE UNIVERSITY PRINTS
BOSTON

BEWICK. 1753—1828
ENGLAND

11
5301
7458
ex. L

UNIVERSITY OF CALIFORNIA
AT
LOS ANGELES

11
5301
2158
w.k

UNIVERSITY OF CALIFORNIA
AT
LOS ANGELES



THE PIPER. FRONTISPIECE OF "SONGS OF INNOCENCE"
(RELIEF ETCHING)

Collection of Mrs. William Emerson, Cambridge

THE UNIVERSITY PRINTS
BOSTON

BLAKE. 1757—1827
ENGLAND

5301

2158

ser. h

UNIVERSITY OF CALIFORNIA
AT
LOS ANGELES



THREE HORSES IN A STABLE (LITHOGRAPH)
Museum of Fine Arts, Boston

THE UNIVERSITY PRINTS
BOSTON

GÉRICAULT 1791—1824
FRANCE

11
5301
2158
ser. L

UNIVERSITY OF CALIFORNIA
AT
LOS ANGELES



ROYAL TIGER (LITHOGRAPH)
Museum of Fine Arts, Boston

THE UNIVERSITY PRINTS
BOSTON

DELA CROIX, 1798—1863
FRANCE

14
5301
2458
ser. h

UNIVERSITY OF CALIFORNIA
AT
LOS ANGELES



MIDNIGHT REVIEW (LITHOGRAPH)
Museum of Fine Arts, Boston

THE UNIVERSITY PRINTS
BOSTON

RAFFET. 1804—1860
FRANCE

11
5301
7458
ser. h

UNIVERSITY OF CALIFOR
AT



E. AND J. DE GONCOURT (LITHOGRAPH)
Museum of Fine Arts, Boston

THE UNIVERSITY PRINTS
BOSTON

GAVARNI. 1804—1866
FRANCE

5301
2158
Dr. L

UNIVERSITY OF CALIFORNIA
AT
LOS ANGELES



LA RUE TRANNONAIN (LITHOGRAPH)
Museum of Fine Arts, Boston

THE UNIVERSITY PRINTS
BOSTON

DAUMIER. 1808 - 1879
FRANCE

74
5301
7158
ser. L

UNIVERSITY OF CALIFORNIA
AT
LOS ANGELES



SCENE FROM "ACTUALITÉS" (LITHOGRAPH)
Museum of Fine Arts, Boston

THE UNIVERSITY PRINTS
BOSTON

DAUMIER. 1808—1879
FRANCE

11
5301
2158
er. L

UNIVERSITY OF CALIFORNIA
AT
LOS ANGELES



INTERIOR OF A PORT (LITHOGRAPH)
Museum of Fine Arts, Boston

301

158

ex. L

UNIVERSITY OF CALIFORNIA
AT
LOS ANGELES



SACHSENHAUSEN, FRANKFORT (LITHOGRAPH)
Museum of Fine Arts, Boston

11
5301
758
ser. 2

UNIVERSITY OF CALIFORNIA
AT
LOS ANGELES



PARK AND FOREST: LARCH (LITHOGRAPH)
Museum of Fine Arts, Boston

THE UNIVERSITY PRINTS
BOSTON

J. D. HARDING. 1798-1863.
ENGLAND

5301
7458
ex. L

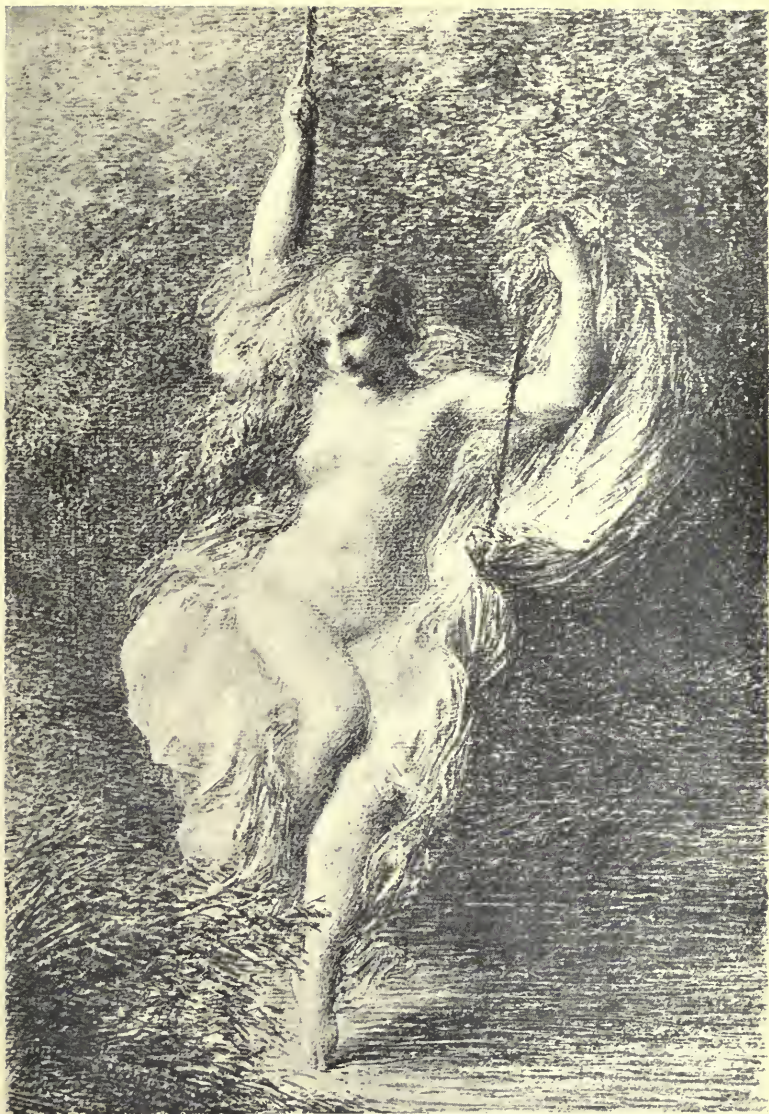
UNIVERSITY OF CALIFORNIA
AT
LOS ANGELES



TOUR DU GROS HORLOGE (LITHOGRAPH)
Museum of Fine Arts, Boston

11
5301
2158
er.h

UNIVERSITY OF CALIFORNIA
AT
LOS ANGELES



SARA LA BAIGNEUSE (LITHOGRAPH)
Museum of Fine Arts, Boston

5301
758
ser. L

UNIVERSITY OF CALIFORNIA
AT
LOS ANGELES



CONVOY OF PRISONERS (LITHOGRAPH)

Museum of Fine Arts, Boston

THE UNIVERSITY PRINTS
BOSTON

MENZEL. 1815—1905
GERMANY

11
5301
2158
ex. L

UNIVERSITY OF CALIFORNIA
AT
LOS ANGELES



TROUPEAU DE PORCS (ETCHING)
Museum of Fine Arts, Boston

THE UNIVERSITY PRINTS
BOSTON

JACQUE. 1813 1894
FRANCE

11
5301
7458
ev. h

UNIVERSITY OF CALIFORNIA
AT
LOS ANGELES



MARSH WITH STORKS (ETCHING)
Museum of Fine Arts, Boston

THE UNIVERSITY PRINTS
BOSTON

DAUBIGNY. 1817-1878
FRANCE

5301
2458
ier. h

UNIVERSITY OF CALIFORNIA
AT
LOS ANGELES



WOOL-CARDER (ETCHING)
Museum of Fine Arts, Boston

5301
7158
ex. L

UNIVERSITY OF CALIFORNIA
AT
LOS ANGELES



WOMAN CHURNING (ETCHING)
Museum of Fine Arts, Boston

5301
2458
ex. h

UNIVERSITY OF CALIFORNIA
AT
LOS ANGELES



THE SOWER (LITHOGRAPH)
Museum of Fine Arts, Boston

THE UNIVERSITY PRINTS
BOSTON

MILLET. 1814--1875
FRANCE

301

458

er. h

UNIVERSITY OF CALIFORNIA
AT
LOS ANGELES



SOUVENIR D'ITALIE (ETCHING)
Museum of Fine Arts, Boston

THE UNIVERSITY PRINTS
BOSTON

COROT. 1796—1875
FRANCE

301
158
er. h

UNIVERSITY OF CALIFORNIA
AT
LOS ANGELES



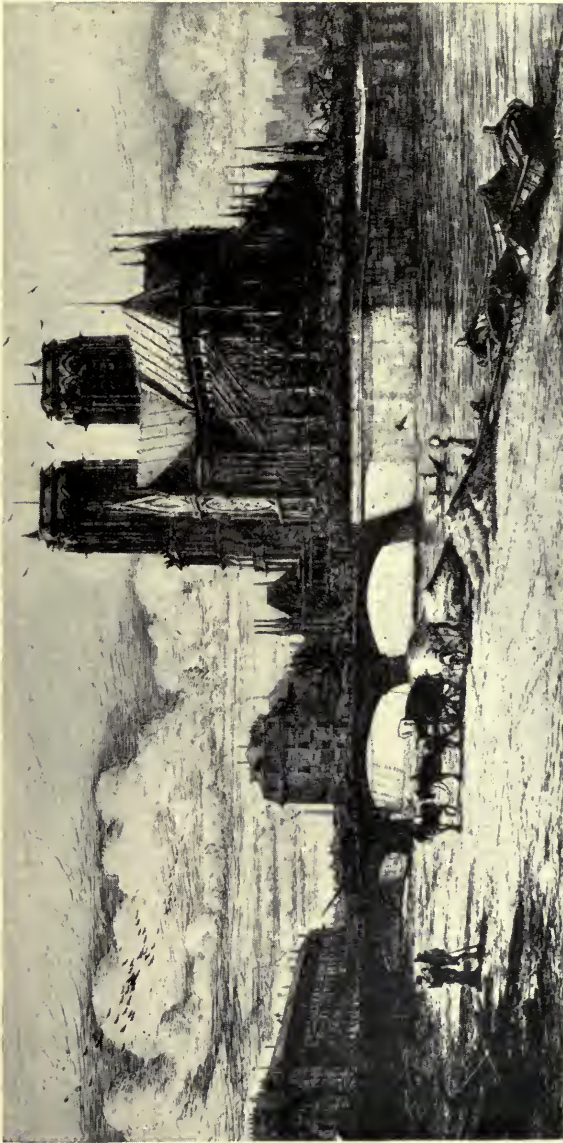
THE TOWER OF ST. NICOLAS—LÈZ ARRAS (LITHOGRAPH)
Museum of Fine Arts, Boston

THE UNIVERSITY PRINTS
BOSTON

COROT. 1796—1875
FRANCE

5301
2158
ser. h

UNIVERSITY OF CALIFORNIA
AT
LOS ANGELES



THE APSE OF NOTRE DAME (ETCHING)
Fogg Art Museum, Cambridge

THE UNIVERSITY PRINTS
BOSTON

MERYON. 1821-1868
FRANCE

5301
2458
ser. L

UNIVERSITY OF CALIFORNIA
AT

LOS ANGELES



GALLERY OF NOTRE DAME (ETCHING)

Fogg Art Museum, Cambridge

11
5301
7158
ex. h

UNIVERSITY OF CALIFORNIA
AT
LOS ANGELES



LE STRYGE (ETCHING)
Fogg Art Museum, Cambridge

THE UNIVERSITY PRINTS
BOSTON

MERYON. 1821—1868
FRANCE

11
301

58

x.l

UNIVERSITY OF CALIFORNIA

AT

LOS ANGELES



LE GAMIN (ETCHING)
Fogg Art Museum, Cambridge

5301
2458
ex. h

UNIVERSITY OF CALIFORNIA
AT
LOS ANGELES



THE CROW (LITHOGRAPH)
Fogg Art Museum, Cambridge

**THE UNIVERSITY PRINTS
BOSTON**

**MANET. 1832—1883
FRANCE**

301

158

or. h



LES BOULEAUX (ETCHING)
Museum of Fine Arts, Boston

THE UNIVERSITY PRINTS
BOSTON

LEGROS. 1837 1911
FRANCE (ENGLAND)

5301

1158

er. L

UNIVERSITY OF CALIFORNIA
AT
LOS ANGELES



BLACK LION WHARF (ETCHING)
Museum of Fine Arts, Boston

5301
458
er. h

UNIVERSITY OF CALIFORNIA
AT
LOS ANGELES



VENICE (ETCHING)
Museum of Fine Arts, Boston

5301
458
er. L

UNIVERSITY OF CALIFORNIA
AT
LOS ANGELES



BEQUET (DRY-POINT)
Museum of Fine Arts, Boston

THE UNIVERSITY PRINTS
BOSTON

WHISTLER. 1834—1903
UNITED STATES

11
5301
7158
er. L

UNIVERSITY OF CALIFORNIA
AT
LOS ANGELES



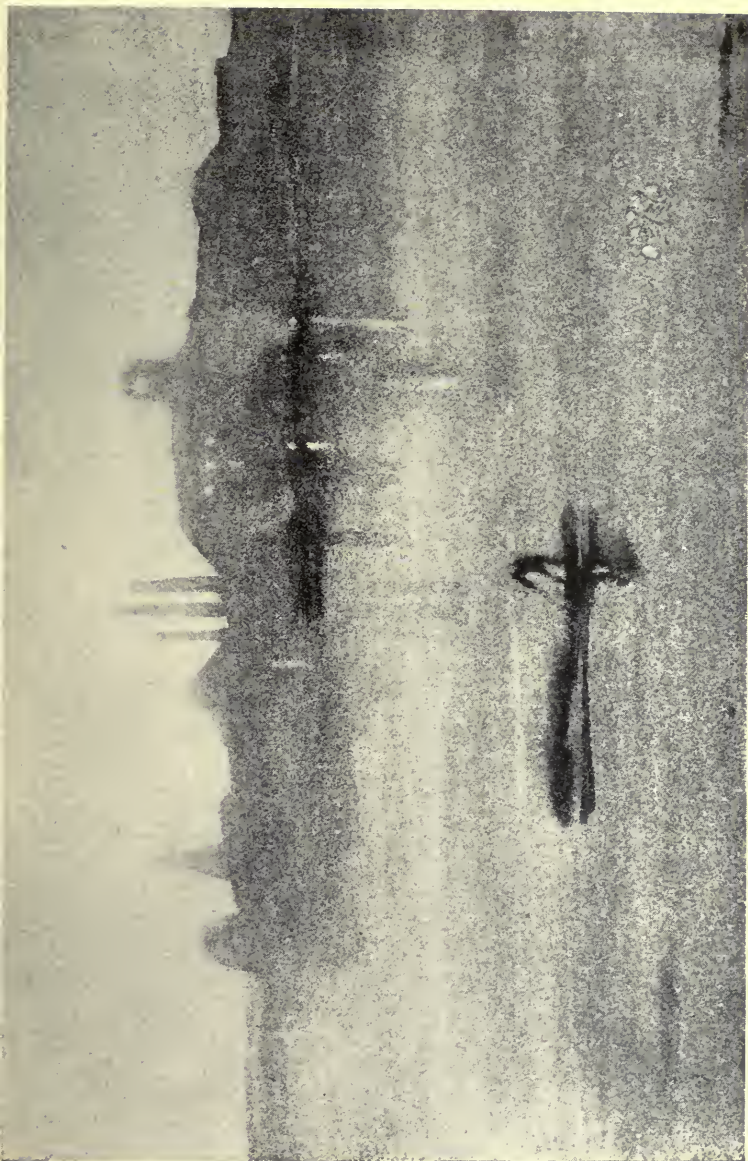
LITTLE NUDE MODEL READING (LITHOGRAPH)
Museum of Fine Arts, Boston

THE UNIVERSITY PRINTS
BOSTON

WHISTLER. 1834—1903
UNITED STATES

301
258
er. L

UNIVERSITY OF CALIFOR
AT
LOS ANGELES



THE THAMES AT BATTERSEA (LITHOGRAPH)
Museum of Fine Arts, Boston

THE UNIVERSITY PRINTS
BOSTON

WHISTLER, 1834—1903
UNITED STATES

5301
7158
ex. 2

UNIVERSITY OF CALIFORNIA
AT
LOS ANGELES



SUNSET IN IRELAND (DRY-POINT)
Museum of Fine Arts, Boston

THE UNIVERSITY PRINTS
BOSTON

HADEN. 1818—1910
ENGLAND

5301

7158

ex. h

UNIVERSITY OF CALIFOR
AT
LOS ANGELES



OLD HOUSES AT AMIENS (ETCHING)
Museum of Fine Arts, Boston

THE UNIVERSITY PRINTS
BOSTON

LEPÈRE. 1849—1918
FRANCE

5301
258
ex. h

UNIVERSITY OF CALIF
AT
LOS ANGELES



THE PRODIGAL SON (ETCHING)
Metropolitan Museum of Art, New York

THE UNIVERSITY PRINTS
BOSTON

FORAIN, 1853—
FRANCE

301
458
v. L

UNIVERSITY OF CALIFORNIA
AT
LOS ANGELES



MME. SIMON (ETCHING)
Museum of Fine Arts, Boston

5301
7158
ser. h

x
UNIVERSITY OF CALIFORNIA
AT
LOS ANGELES

UNIVERSITY OF CALIFORNIA LIBRARY
Los Angeles

This book is DUE on the last date stamped below.

JN 21 '55

NO 1 '55

NO 3 '55

Feb 29 '60

Jun 3 '60

Jun 5 REC'D ED-URB

III

JUN 24 1974
JUN 13 1974

Form L9-42m-8,'49 (B5573)444

THE LIBRARY
UNIVERSITY OF CALIFORNIA
LOS ANGELES

UC SOUTHERN REGIONAL LIBRARY FACILITY



A 000 140 879 8

